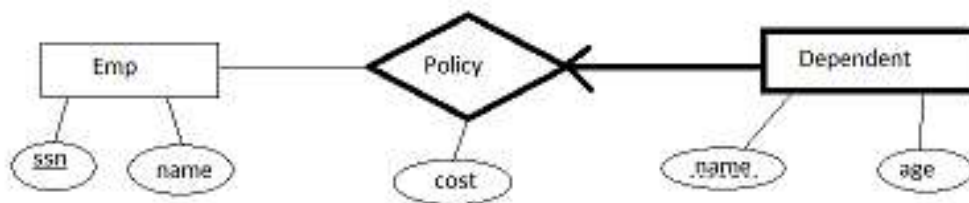
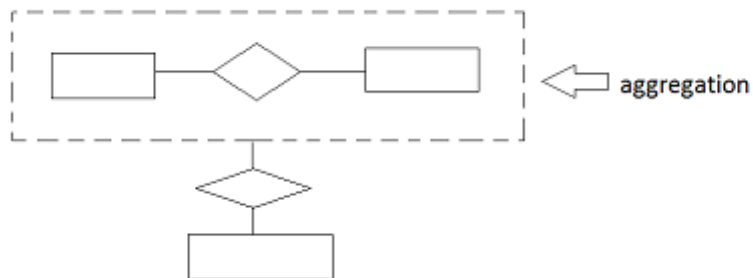


-WEAK ENTITIES-



Name of “Dependent” is unique for associated employee.

-AGGREGATION-



Let's remember our quiz question!

Movie: name, release date

Studio: an id, name, address

Director: an ssn, a name

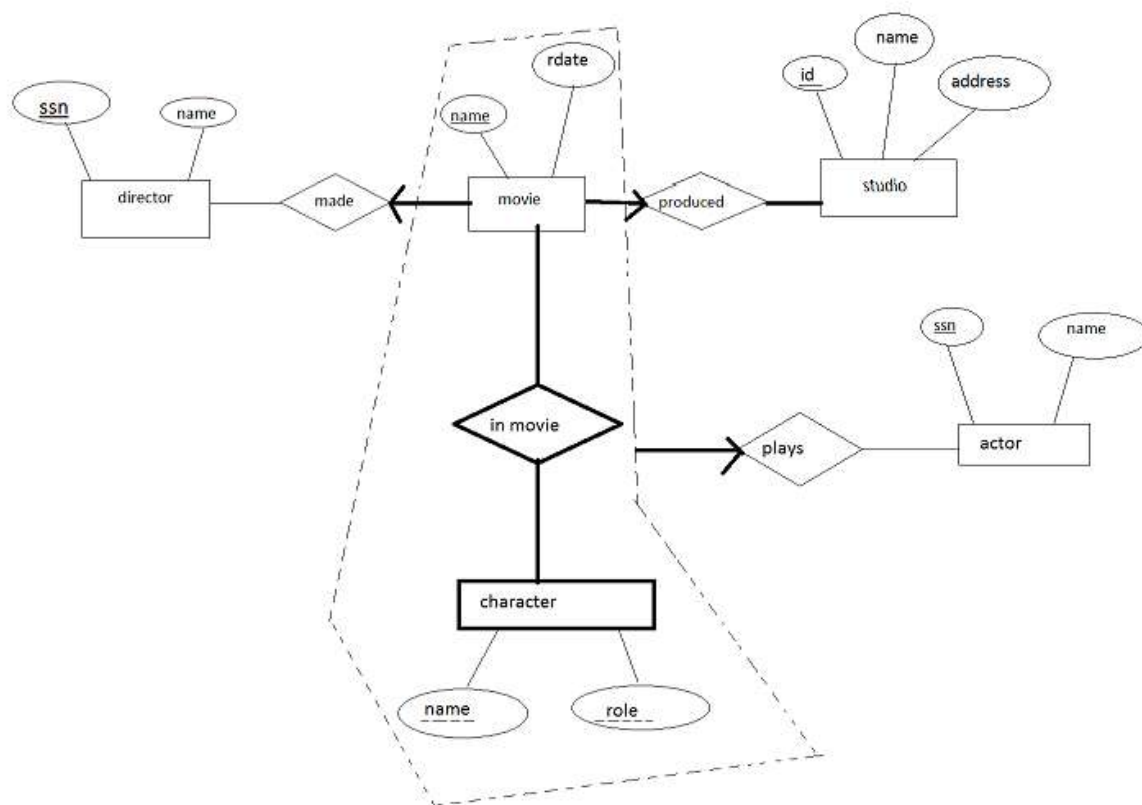
A character in a movie: a name, a role

AN actor: ssn, name

Each movie is produced in a single studio

Each movie is directed by a single director

An actor plays a character in a movie

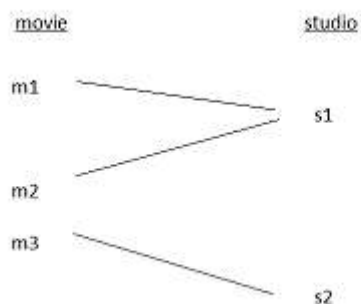


About the relation between movie and director:

For all movies there should be a director. But there might be a director who did not make a movie.

About the relation between movie and studios:

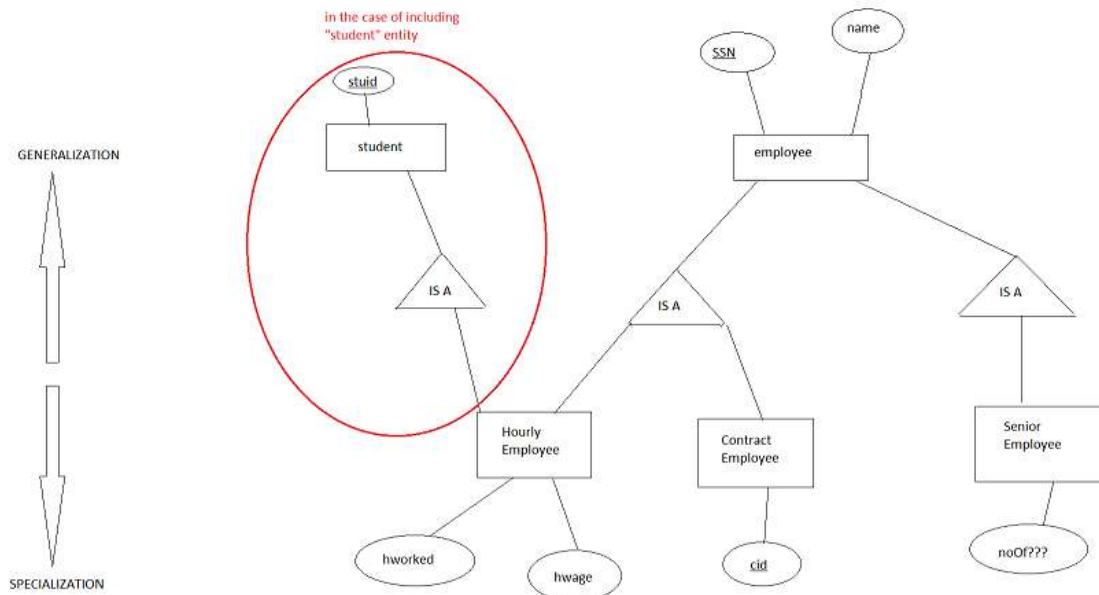
For a movie, there must be a studio. Additionally, at least one movie is produced for all studios.



About the relation between movie and character:

For all characters, there has to be a movie that they played in.

-CLASS HIERARCHIES-



Think them as classes that we used before (CS114).

Attributes of "Employee" are inherited by Hourly Employee, Contract Employee and Senior Employee.

Overlap Constraints:

Contract Employee OVERLAPS Senior Employee.

Employee (ssn, name, age, address,...)

***In the case of including student entity → HourlyEmployee(ssn, stuid, hworked, hwage)